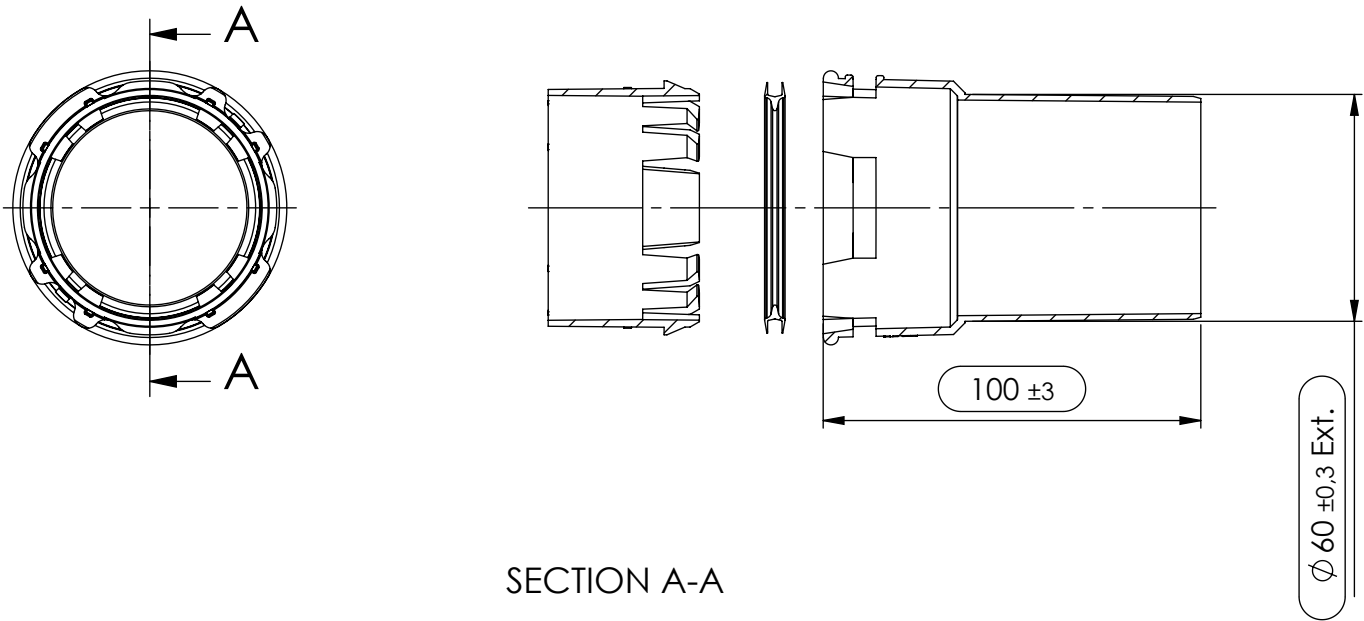
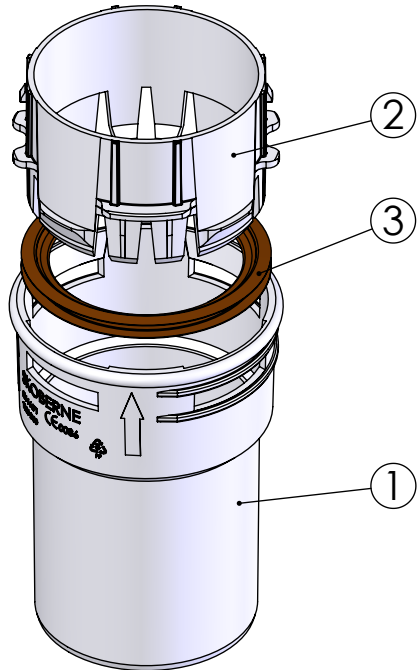

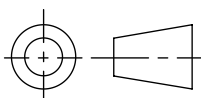


This drawing is property of Cox Geelen and may not be copied in whole or in part without the prior written consent of the owner



SECTION A-A

3	1	Seal flexible pipe ø60	FKM	A1338	-
2	1	Mounting ring ø60 v4	PP 20%Glass fiber	A1407	-
1	1	Connection shaft cover ø60	PPs	-	-
Pos.	QTY.	Description	Material	Drawing	Part nr
Unit of measure: mm		Name: R. Houwen	Date: 07-11-2012	Material: -	
Scale: 1:2		Checked: C. Vaessen	Date: 07-11-2011	Mass[g]: 49.74	
Title:				Comments:	
PP adapter flex for chimney bend ø60					
CAD Model: CoxDENS flex adapter flex for chimney bend ø60					
Configuration: Augustus 2011					
 Cox Geelen www.coxgeelen.com		Tolerances: ø = ±0.5 L = ±3 ≤ ±3°		(Inspection dimension)	
				Part.no: ARFZAK600	
				Dwg. no. : A1682 P00 A3	

00	Production drawing	10001	07-11-2011	RoHo
Revisions				