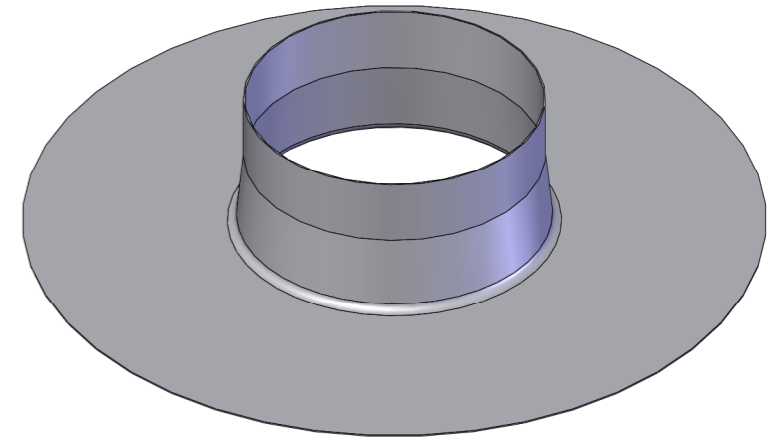
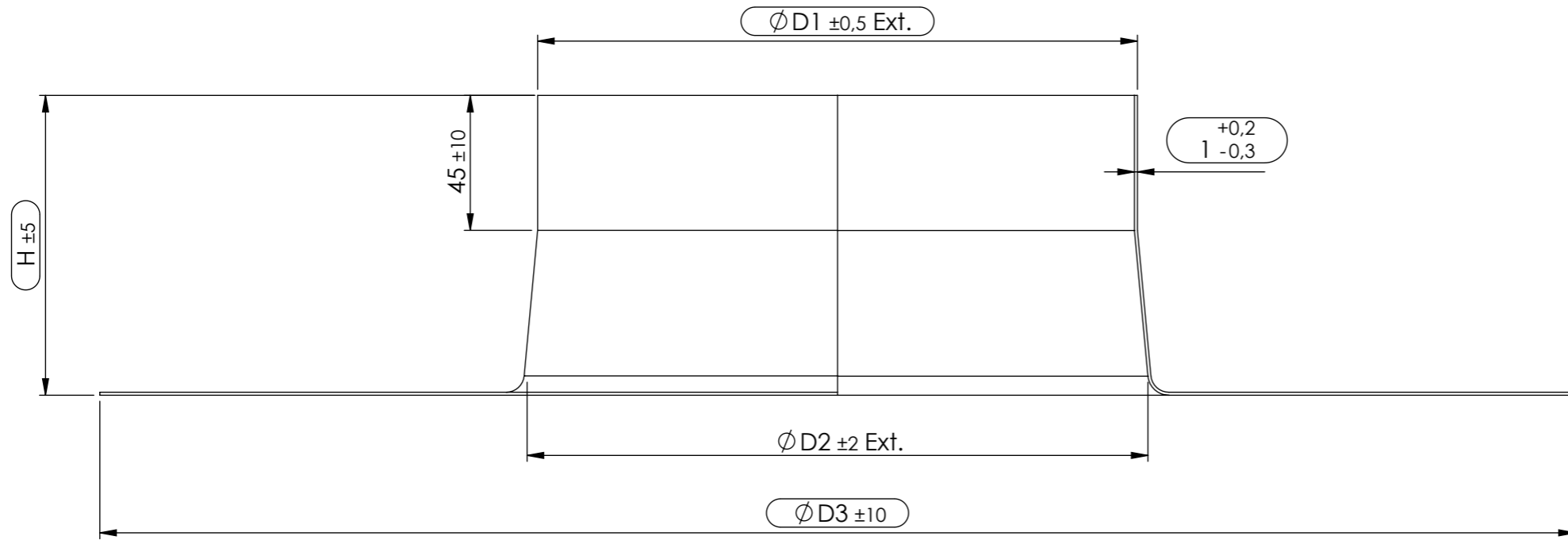


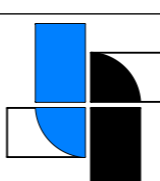
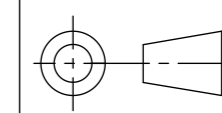
This drawing is property of Cox Geelen and may not be copied in whole or in part without the prior written consent of the owner



RGD	D1	D2	D3	H	Art. nr.	Tek
90	110	117	410	100	232.001	
100	120	127	410	100	232.002	
100	120	127	410	150	232.013	
110	132	137	410	100	232.016	
110	135	137	410	100	232.003	
110	135	137	410	150	232.011	
110	135	146	390	254	232,014	A0953
130	150	157	450	100	232.004	
150	170	177	450	100	232.005	
150	170	177	450	150	232.008	
150	170	181	450	254	232,015	A0954
180	200	207	492	100	232.006	
200	220	227	492	100	232.007	
200	220	227	482	150	232.012	

05

Revisions				
05	Table changed	08087	03-09-2013	RoHo
04	Table changed	08087	30-11-2010	RoHo
03	Table changed	08087	04-11-2010	RoHo
02	Table changed	08087	04-06-2009	RoHo
01	Table changed	08087	23-1-2009	RoHo
00	Production drawing	08083	29-10-2008	RoHo

Unit of measure: mm	Name: R. Houwen	Date: 29-10-2008	Material: EN-AW-1050A
Scale: 1:2	Checked: L. Goessen	Date: 29-10-2008	Mass[g]: 440.52
Title: Flat flashing			Comments:
 <b>Cox Geelen</b> Emmastraat 92 6245 HZ Eijsden Nederland T: +31 (0) 43-4099500 F: +31 (0) 43-4091987		Tolerances: $\phi = \pm 0.5$ $L = \pm 3$ $\angle = \pm 3^\circ$	Projection: 
Part.no: -			Dwg. no.: <b>A0855 P 05</b>   A3