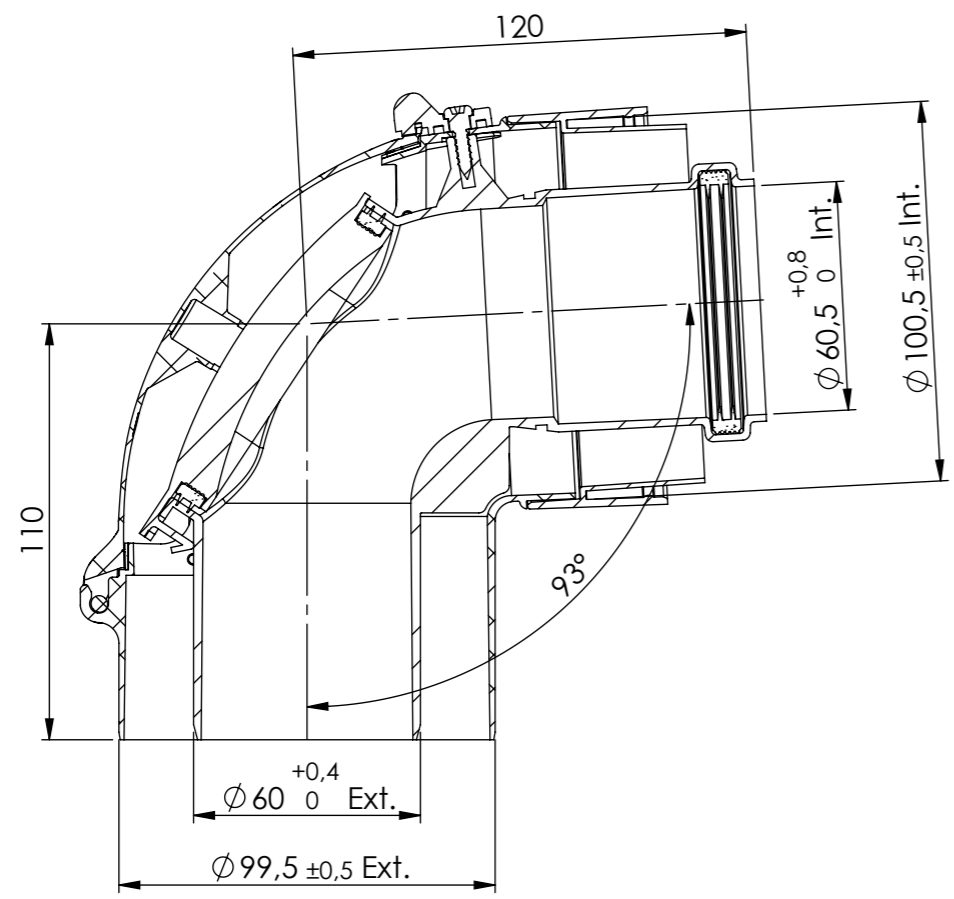
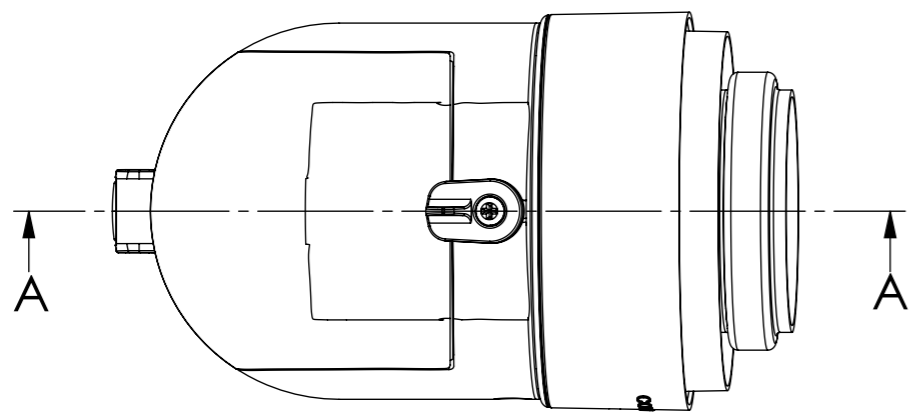
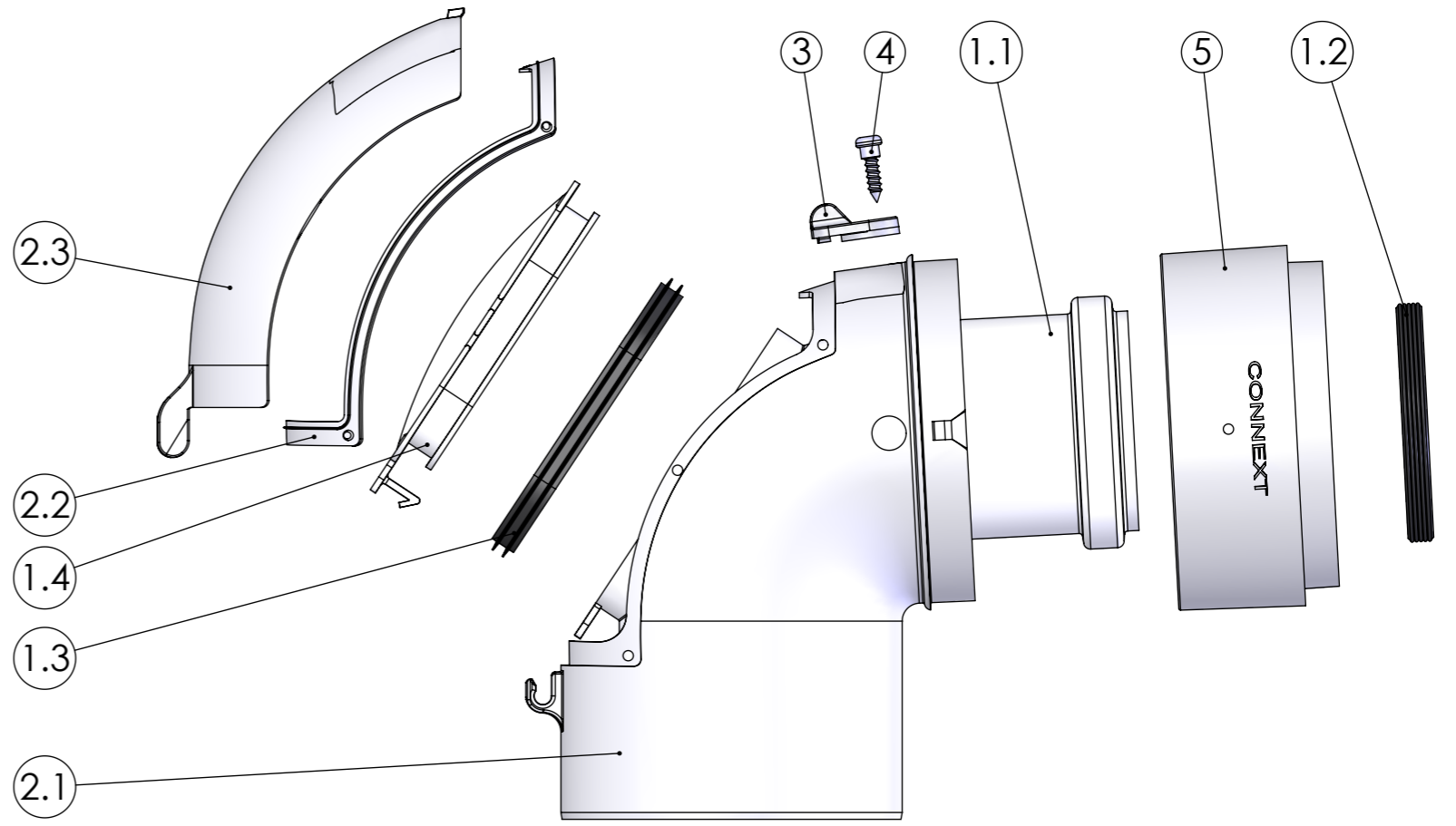


This drawing is property of Cox Geelen and may not be copied in whole or in part without the prior written consent of the owner



SECTION A-A

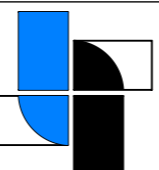
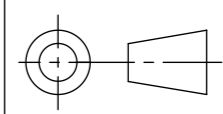


Pos.	QTY.	Description	Material	Drawing	Part nr
5	1	Coupling unit $\phi 100$	PC/ABS	08001	-
4	1	Screw $\phi 5.5$	ELVZ	A0007	891526
3	1	Slide clip	PA6	A0001	890869
2.3	1	Inspection cap $\phi 100$	EN-AC46000	A0209	891725
2.2	1	Seal	Silicone	A0212	-
2.1	1	Inspection Bend $\phi 100 - 87^\circ$	EN-AC46000	A0211	-
2	1	Air inspection bend $\phi 100$	-	A0697	891722
1.4	1	Inspection cap	PPs	A0011	-
1.3	1	Seal	EPDM	L0295	891358
1.2	1	Seal $\phi 60$	EPDM	L0295	891358
1.1	1	Inspection bend $\phi 60 - 87^\circ$	PPs	A0535	-
1	1	Flue inspection bend $\phi 60$	-	A0955	891727

Unit of measure:	mm	Name:	R.Houwen	Date:	05-03-2009	Material:	-
Scale:	1:2	Checked:	L.Goessen	Date:	05-03-2009	Mass[g]:	455.88

Title: Inspection bend $\phi 60-100$ PPs-Alu

Comments: Thickness of coating: $>70\mu\text{m}$

 Cox Geelen Emmastraat 92 6245 HZ Eijsden Nederland T: +31 (0) 43-4099500 F: +31 (0) 43-4091987	Tolerances: $\phi = \pm 0.5$ $L = \pm 3$ $\angle = \pm 3^\circ$	Projection: 	Part.no: AECN Dwg. no.: A0956 P 01	A3
---	--	--	--	----

Revisions				
01	Drawing changed	13003	23-04-2013	MaUb
00	Production drawing	09025	05-03-2009	RoHo