

**KETELPLATENWISSELAAR  
BOILER PLATE HEAT EXCHANGER  
KESSEL PLATTENWÄRMETAUSCHER  
ÉCHANGEUR EN PLAQUE CHAUDIÈRE  
SCAMBIATORE SECONDARIO CALDAIA  
锅炉板式换热器**

**3905186**

**SE  $\Delta T$  10K 70 - 100 kW**

**3905187**

**DE  $\Delta T$  10K 120 - 140 - 170 - 200 kW**

**3905188**

**SE  $\Delta T$  15K 70 - 100 kW**

**3905189**

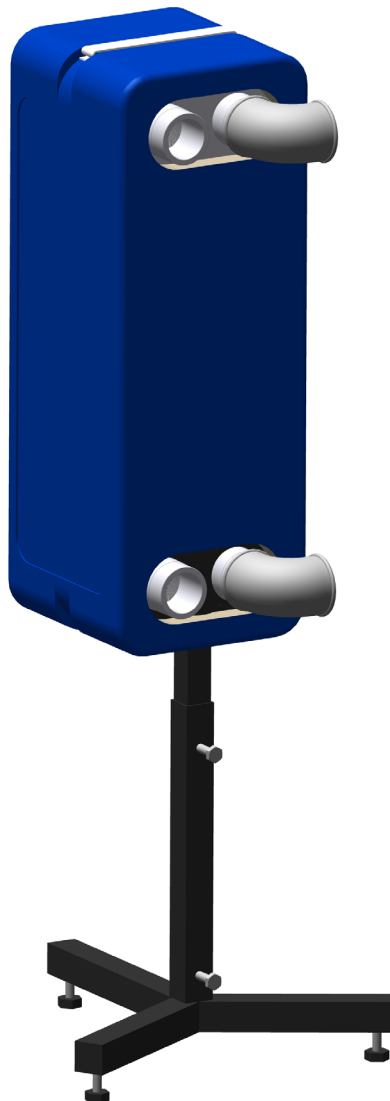
**DE  $\Delta T$  15K 120 - 140 - 170 - 200 kW**

**3905190**

**SE  $\Delta T$  20K 70 - 100 kW**

**3905191**

**DE  $\Delta T$  20K 120 - 140 - 170 - 200 kW**

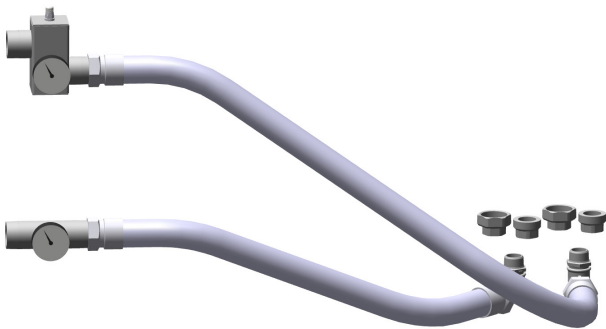




**Optie / Option / Zubehör / Option / Optionale / 选配**

**3905192**

AANSLUITSET KETEL VOOR PLATENWISSELAAR  
 BOILER PLATE HEAT EXCH CONNECTION KIT  
 KESSEL PLATTENWÄRMETAUSCHER ANSCHLUSSKIT  
 KIT RACC CHAUDIÈRE POUR ÉCHANGEUR EN PLAQUE  
 KIT CONNESSIONE SCAMB SECONDARIO CALDAIA  
 锅炉板式换热器连接套件



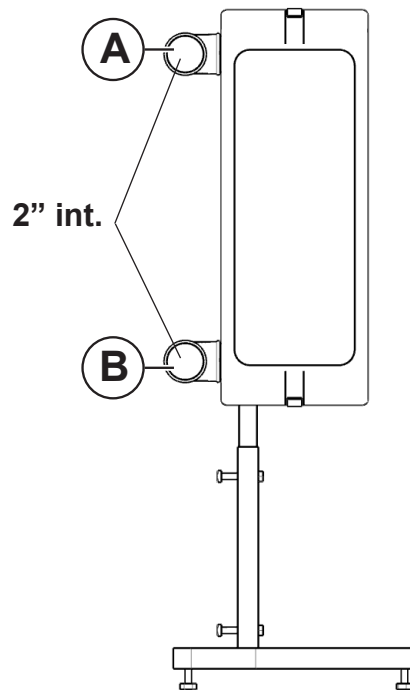
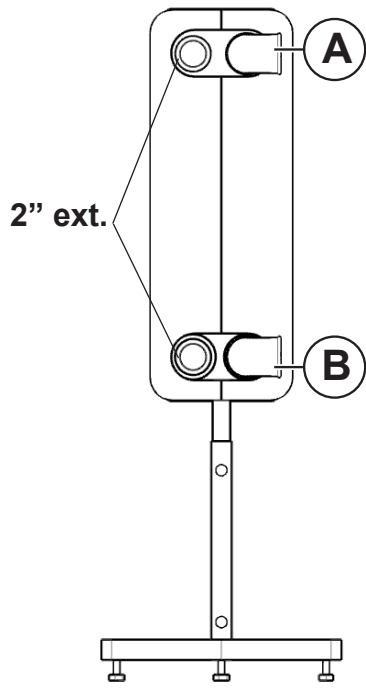
**Optie / Option / Zubehör / Option / Optionale / 选配**

**3905193**

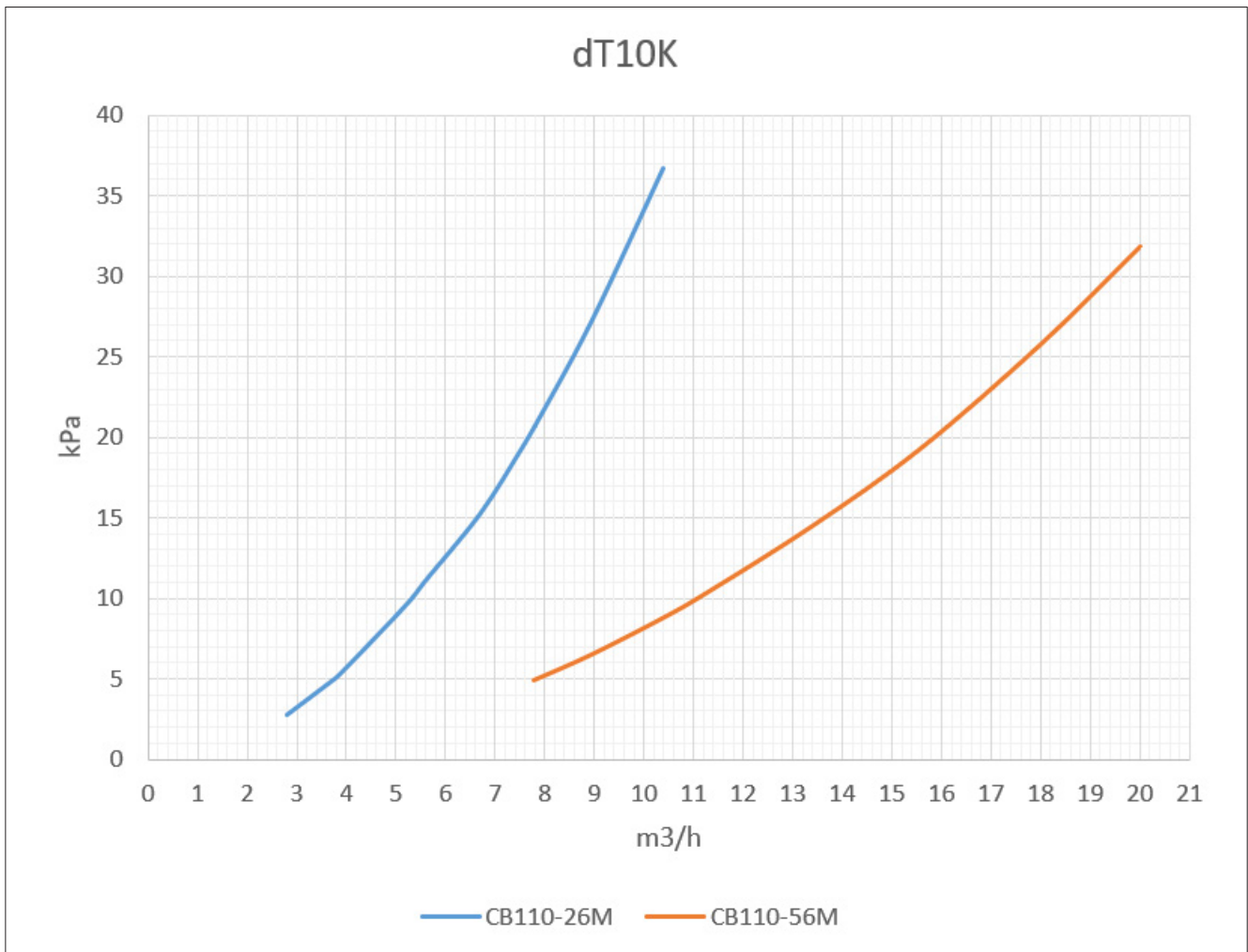
EXPANSIEVATSET  
 BOILER EXPANSION VESSEL KIT  
 KESSEL AUSDEHNUNGSGEFÄß  
 KIT VASE D'EXPANSION  
 KIT CONNESSIONE VASO ESPANSIONE  
 锅炉膨胀罐组件



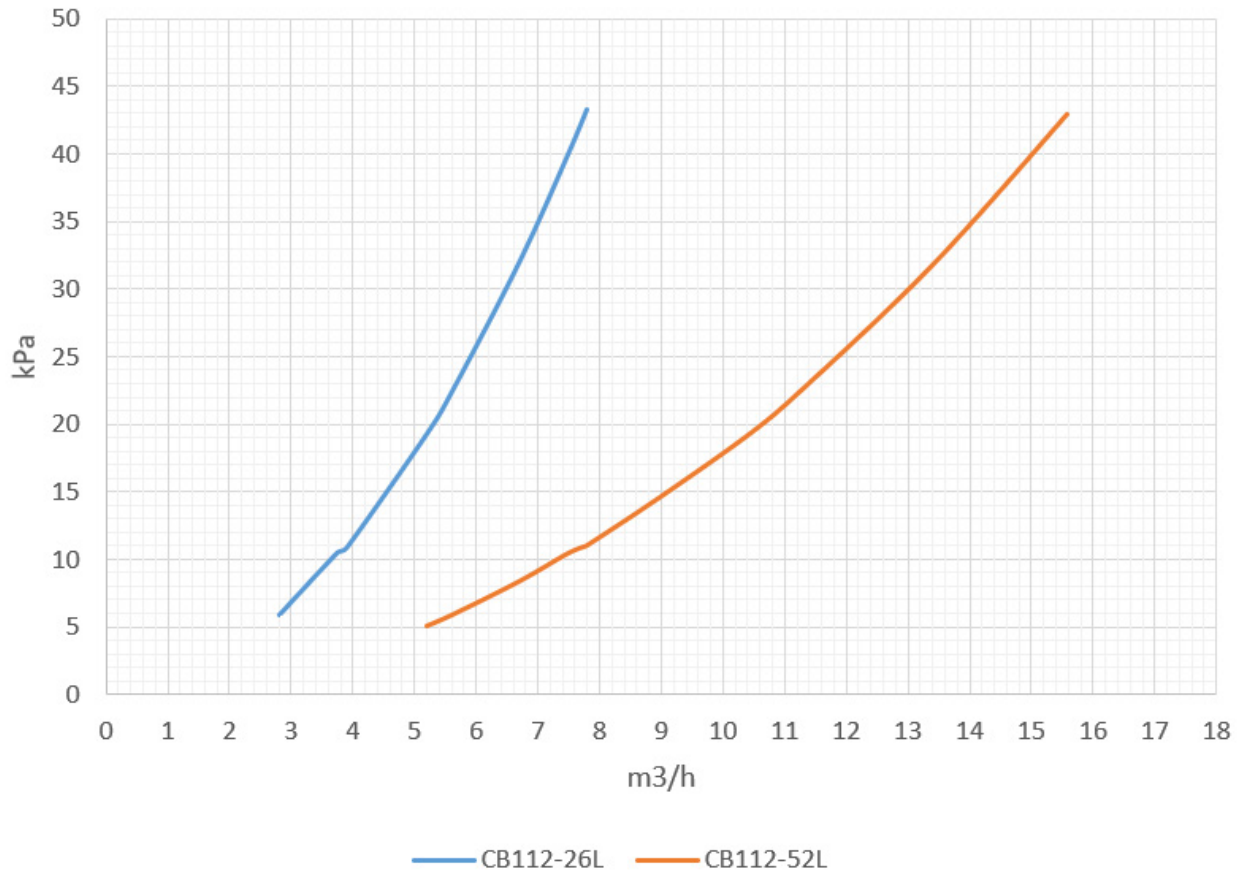
- A** - Aanvoer  
Flow  
Vorlauf  
Départ  
Mandata  
供水
- B** - Retour  
Return  
Rücklauf  
Retour  
Ritorno  
回水



			60	70	100	120	140	170	200
<b>Primaire circuit</b> <b>Primary circuit</b> <b>Primärkreis</b> <b>Circuit primaire</b> <b>Circuito primario</b> 一次回路	dT=20K	m3/h	2,45	2,81	3,90	4,76	5,62	6,70	7,79
		L	4	4	4	4	4	4	4
<b>Expansievat</b> <b>Expansion vessel</b> <b>Ausdehnungsgefäß</b> <b>Vase d'expansion</b> <b>Vaso di espansione</b> 膨胀水箱									
<b>Secundaire circuit</b> <b>Secondary circuit</b> <b>Sekundärkreis</b> <b>Circuit secondaire</b> <b>Circuito secundario</b> 二次回路	dT=20K	Type/Typ/Tipo/ 型号	CB112-38M	CB112-38M	CB112-38M	CB112-68M	CB112-68M	CB112-68M	CB112-68M
		Code/Kode/Codice/ 代码	3905190	3905190	3905190	3905191	3905191	3905191	3905191
		m3/h	2,45	2,81	3,90	4,76	5,62	6,70	7,79
		kPa	4,3	5,8	10,7	5,0	7,2	9,9	13,2
	dT=15K	Type/Typ/Tipo/ 型号	CB112-26L	CB112-26L	CB112-26L	CB112-52L	CB112-52L	CB112-52L	CB112-52L
		Code/Kode/Codice/ 代码	3905188	3905188	3905188	3905189	3905189	3905189	3905189
		m3/h	3,26	3,75	5,20	6,35	7,49	8,93	10,39
		kPa	7,7	10,5	19,3	7,2	10,4	14,4	19,1
	dT=10K	Type/Typ/Tipo/ 型号	CB110-26M	CB110-26M	CB110-26M	CB110-56M	CB110-56M	CB110-56M	CB110-56M
		Code/Kode/Codice/ 代码	3905186	3905186	3905186	3905187	3905187	3905187	3905187
		m3/h	4,89	5,62	7,80	9,53	11,24	13,40	15,58
		kPa	8,2	11,2	20,7	7,3	10,3	14,5	19,3



dT15K



dT20K

